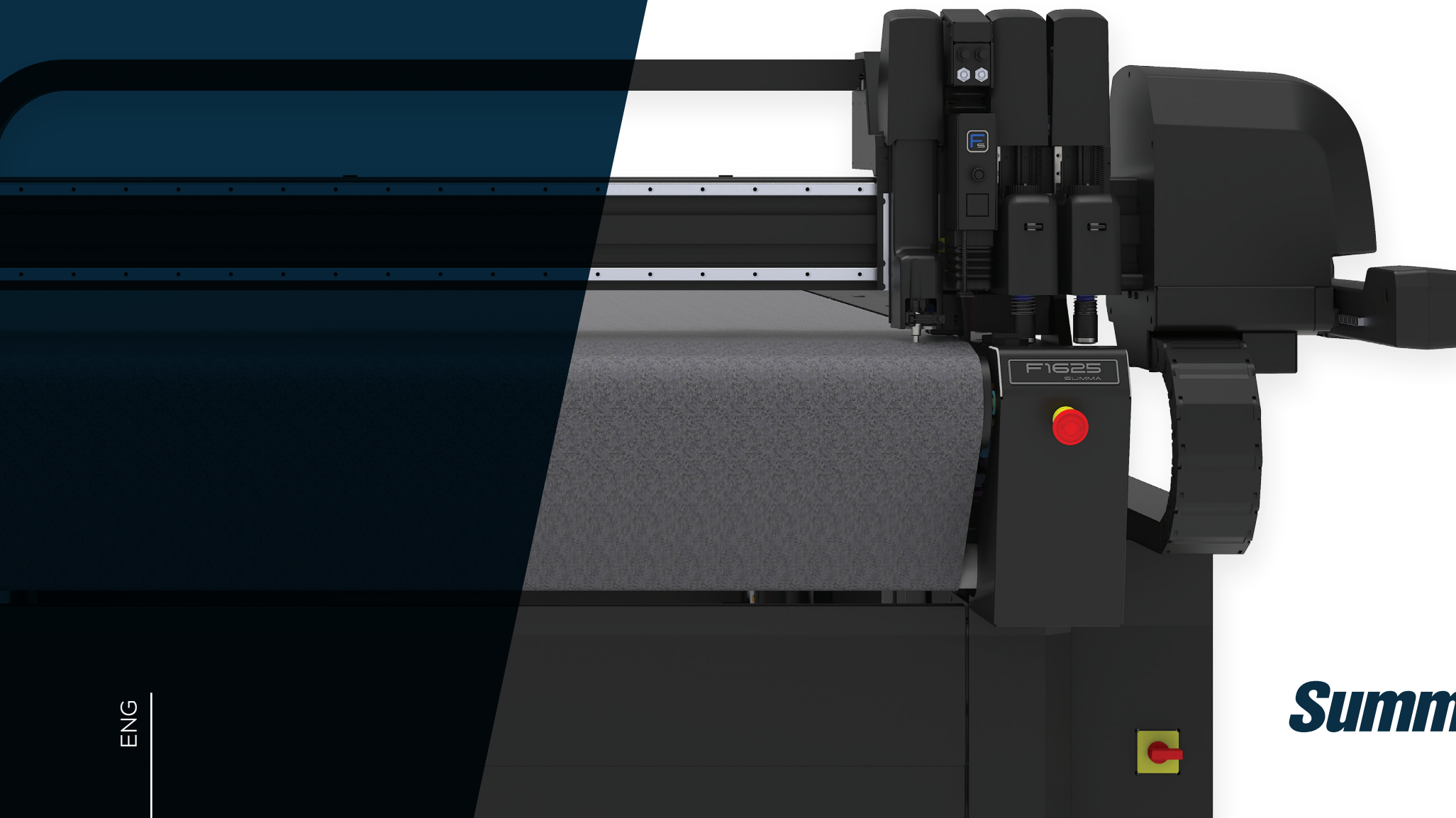


F SERIES

DIGITAL FLATBED CUTTERS FOR SIGNAGE,
PACKAGING & TEXTILES

**BRING YOUR
DESIGNS TO LIFE**




ENG

Summa

A woman with long curly hair, wearing a black t-shirt with a white 'a' logo, is operating a large industrial flatbed cutter in a factory. The machine is processing a large sheet of material. The background shows various industrial equipment, including a large blue tank and a control panel. The scene is lit with overhead industrial lights.

Summa



“Within just a few months,
we couldn’t imagine our workflow
without our F Series flatbed cutter.”

Melanie Schotte
Director at Alpha Press



BRING YOUR DESIGNS TO LIFE

Unlock the full potential of your signage, packaging, and textiles with the Summa F Series, a high-performance line of digital flatbed cutters built for professionals who demand precision, versatility, and flawless results. Take on a broader range of applications, serve more clients, and stay ahead of the curve in a competitive market.

From roll to sheet media, the F Series delivers clean, precise cuts across vinyl, foam board, PVC, corrugated cardboard, textiles, and rigid substrates, enabling you to tackle everything from window decals and POP displays to custom boxes and industrial projects with ease.

Backed by Summa's proprietary GoProduce™ production workflow software and over 15 precision tools—including a kiss-cut tool with **±0.02 mm repeatability**—the F Series brings unmatched control to every cut.

Ready to elevate your production?

Discover how the F Series can transform your workflow and grow your business.



WHAT MAKES AN F SERIES FLATBED CUTTER UNIQUE?



TWIN WORKFLOW

Combine a Summa roll cutter for kiss-cutting with a Flatbed for through-cutting for maximum productivity.

BARCODE WORKFLOW

Scan barcode for automatic file processing and cutting of multiple jobs without the need for manual intervention.

AUTOMATIC TOOL RECOGNITION

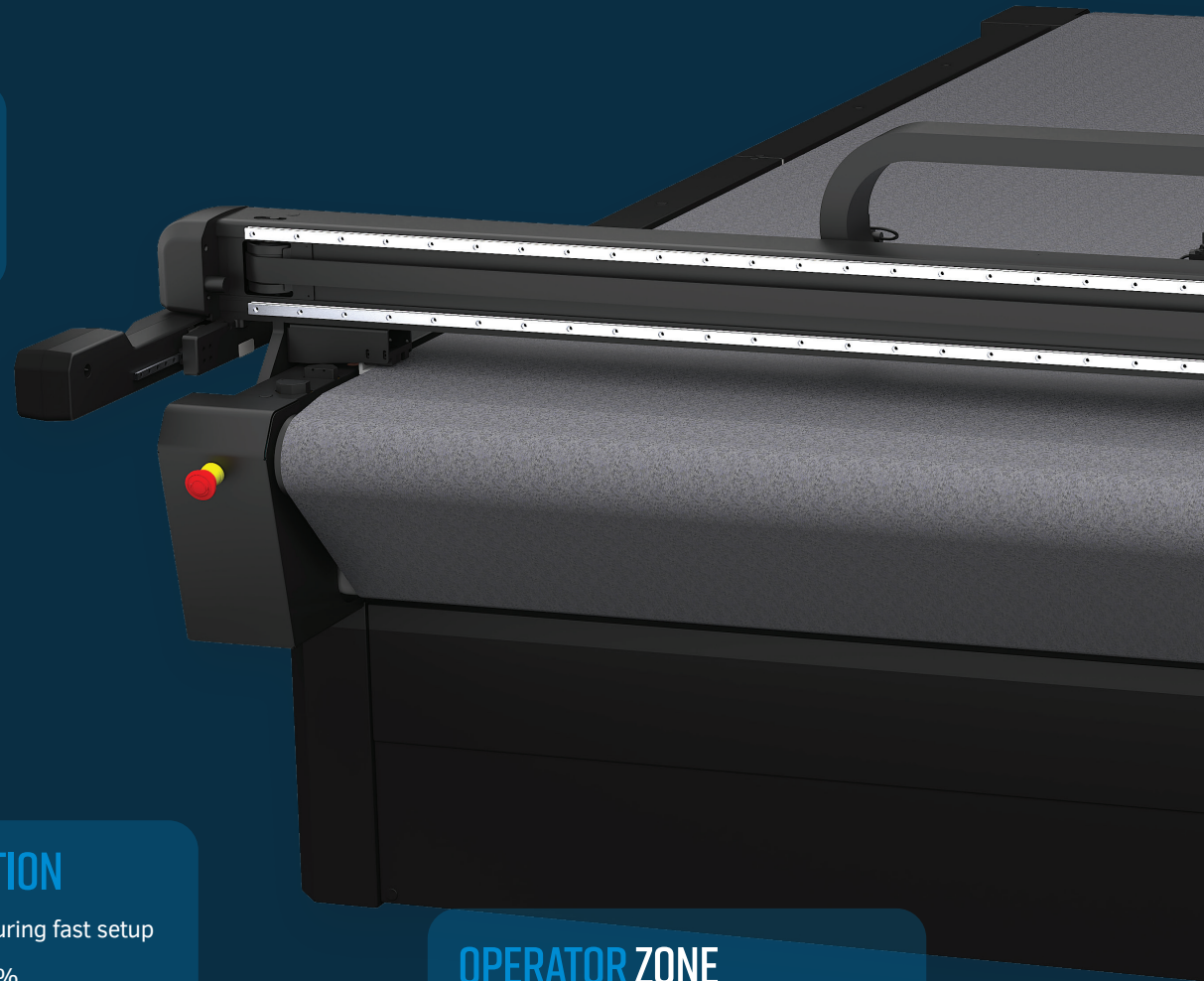
Detect the inserted tool automatically, ensuring fast setup and improving operator accuracy up to 60%.

KISS-CUTTING

Deliver unmatched precision for high-volume sticker and decal production with a ± 0.02 mm repeatability.

OPERATOR ZONE

Collect output safely without interrupting ongoing cutting operations.



TANDEM WORKFLOW

Load or unload material on one end while cutting continuously on the other, significantly increasing uptime.

TRIPLE HEAD FLATBED

Hold up to three modules at once, enabling seamless multi-technique workflows and routing capabilities.

COMPENSATION MODES

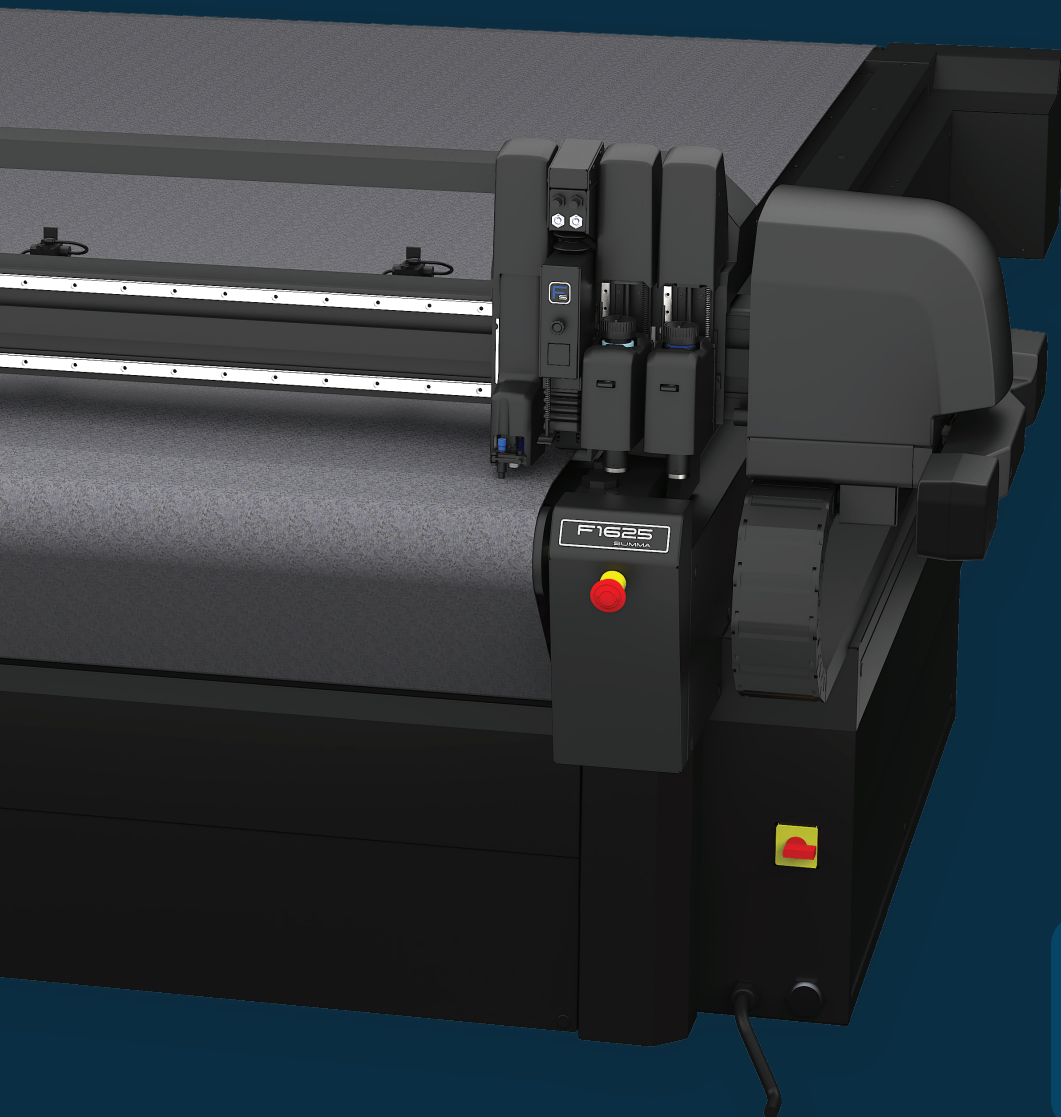
Correct material misalignment, distortion, or overcuts automatically through smart software adjustments.

GOPRODUCE™ SOFTWARE

Streamline your workflow by automating material recognition, tool settings, and workflow navigation.

AUTOMATIC DEVICE CALIBRATION (ADC)

Measure and set the cutting depth automatically, ensuring precise cuts while saving setup time.



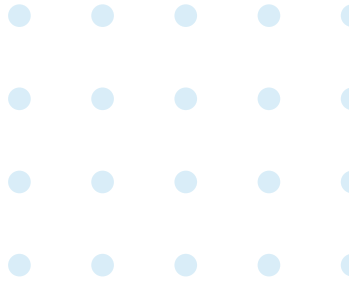
GOPRODUCE™ FLATBED EDITION

Our user-friendly, in-house-developed workflow production software is designed for seamless machine operation. With a modern, intuitive interface, you can maximise efficiency and precision through features, such as:

- **Action Sets** allow you to automate tasks into one-click workflows.
- **The Material Manager** enables you to choose your material while the software automatically sets the correct tools.
- **Compensation Modes** help minimise overcuts in corners, ensuring cleaner results.
- **Sorting** optimises cutting paths to reduce work time by sorting objects for the most efficient cuts.
- **Backside-cutting** protects the printed surface of your media for a flawless result.
- **Barcode Functionality** lets you create a quicker and more efficient workflow.
- **20+ RIPs** are compatible with the GoProduce™ software, incl. Onyx, Caldera, and FlexiSign.

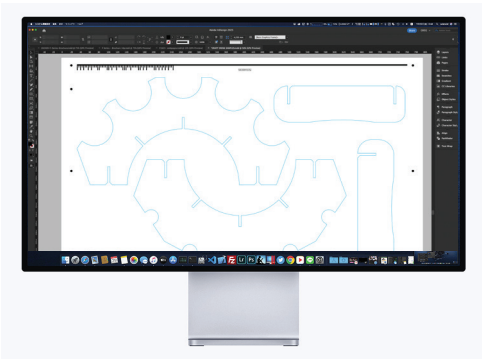


GO
PRODUCE
FLATBED EDITION



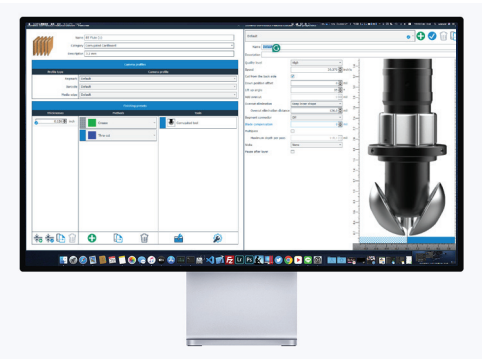
Create a One-Click Workflow in Three Simple Steps

Let's say you run a sign business that produces a high volume of POP displays using EE Flute. You want to take advantage of barcode functionality, compensate for overcuts, and use backside cutting to protect your prints. Good news! You can set up a powerful, fully automated workflow that's ready to go with just one click.



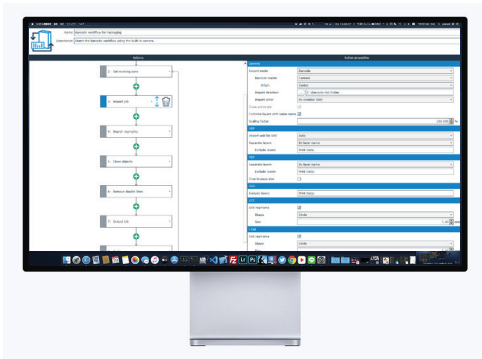
Step 1: Prepare Your RIP Files

Start by adding named layers to your design. Your RIP software will automatically detect the cut lines, apply registration marks, and generate barcodes.



Step 2: Optimise Your Media

Choose or add your media profile in the Material Manager. Select your preferred cutting methods and tools, then fill out your parameters for the perfect cut.

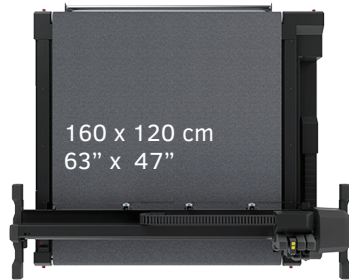


Step 3: Customise Your Action Set

Pick a ready-made action set or create one tailored to your needs. Here, you can fine-tune settings such as compensation modes, cut order sorting, and other output preferences.

Once everything's set, simply drop your files into the correct folder and click your workflow. That's it! Your POP displays are ready to cut, with every detail handled for you.

MODELS



F1612

Make impactful signs that stick

- Wide-format printing professionals
- Mainly used for roll-based workflows
- Media handling: conveyor extension, roll-up, extension tables, basket, sheet feeder
- Ideal for flexible media like vinyl and banners



F1625

Create powerful signs that stand out

- Wide-format printing professionals
- Ideal for both roll and sheet-based workflows
- Media handling: roll-up, extension tables, basket, sheet feeder
- Ideal for flexible media like vinyl and banners, and 4'x8' (122x244 cm) board media like PVC, acrylics, and ACM



F1432

Produce high-visibility traffic signs that enhance safety

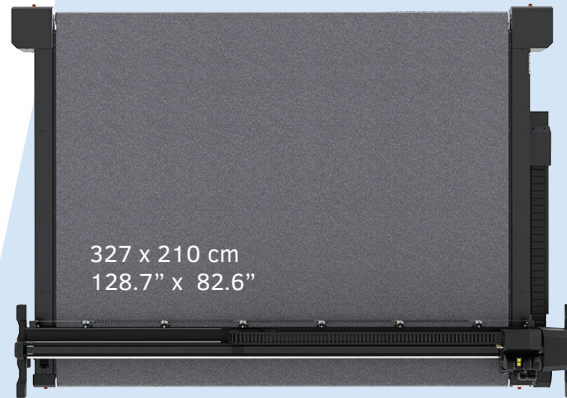
- Traffic signage manufacturers
- Ideal for both roll and sheet-based workflows
- Media handling: Heavy duty roll support, basket
- Ideal for reflective media in both flexible and board form



F1832

Choose the one
that can do it all

- Signage, packaging, and textile professionals
- Ideal for both roll and sheet-based workflows
- Media handling: heavy duty roll support
- Ideal for 5x10' (150 x 300 cm) board media like acrylic, corrugated board, and ACM; flexible media like vinyl and banners; and textiles like Samba



F3220

Construct durable textile
signage that survives outdoors

- Outdoor signage professionals
- Ideal for both roll and sheet-based workflows
- Media handling: heavy duty roll support
- Ideal for banners and textiles containing PVC



F3232

Develop sturdy displays
that catch the eye

- Packaging and high-production signage professionals
- Mainly used for sheet-based workflows
- Media handling: heavy duty roll support
- Ideal for board media like honeycomb, Reboard, and ACM

**FOR EVERY CUTTING NEED,
THERE IS A SUMMA**

MODULES & TOOLS

The F Series' triple head holds up to three modules simultaneously, allowing multiple finishing techniques, such as creasing, cutting, and routing, without the need for tool changes. This smart design streamlines production, boosts efficiency, and makes it easy to handle diverse materials and complex jobs with a single, powerful machine.



Tangential Module

Cut with up to 10 kg of downforce

Delivering 10 kg of downforce, the Tangential Module works with a wide range of tools to process various materials with consistent precision. It's ideal for applications that demand clean, accurate results across different types of media.



Kiss-Cutting Tool

Kiss-cut complex shapes

Materials

Adhesive vinyl, window film, sandblast material, magnetic material, paper (<200g), adhesive PVC banner material



Single-Edge Cutout Tool

Cut (semi-) rigid media up to 6 mm

Materials

Cardboard (300–500g), foamboard (≤ 2 mm), adhesive vinyl, paper (<200g)



Double-Edge Cutout Tool

Cut rigid media up to 5 mm

Materials

Cardboard, adhesive vinyl, reflective sheeting, Adhesive PVC, PVC banner, Expanded PVC board (≤ 1.2 mm), Polycarbonate (≤ 0.6 mm), Polypropylene (≤ 1.2 mm), Magnetic material



Heavy Duty Cutout Tool

Cut dense media up to 15 mm

Materials

Corrugated PP board (≤ 5 mm), Adhesive vinyl, Adhesive PVC, PVC banner, Cardboard, Expanded PVC board, Foamcore with liner



Creasing Tools

Crease and score at various depths and radii

Materials

Corrugated B, C, A, EE, BC flute (1.5–6 mm),
Cardboard (300–500g), Polypropylene sheets
(≤ 1.2 mm), Paper (<200g)



V-Cut Tools

Cut angles (0° - 45°) in rigid media up to 27 mm

Materials

Honeycomb board, Foamcore with paper liner,
Rigid sandwich boards, Display board



Electronic Oscillating Tool (EOT)

Kiss-cut complex shapes

Materials

Corrugated B, C, E flute (1.5–4 mm), Foamcore
with paper liner (≤ 10 mm), Honeycomb board
(< 10 mm), Gaskets



Pneumatic Oscillating Tool (POT)

Cut thick media up to 8 mm

Materials

Triple/double-walled cardboard, Packaging
foam, Honeycomb board (≥ 10 mm), Re-board®,
Foamboard with plastic, Rubber



POT L

Cut thick and soft media up to 42 mm

Materials

Packaging foam (extra thick), Honeycomb board,
Re-board®, Rubber, Foamcore with liner (> 5 mm)



Perforating Tool

Perforate both thin and thick media

Materials

Solid cardboard, Corrugated board,
Polypropylene film



Bevel-Cut Tool

Cut V-shaped grooves at 45° up to 27 mm

Materials

Deco felt, Rubber, Solid board, Polypropylene
(≤ 1.2 mm), Polycarbonate (≤ 0.6 mm), Soft
foam board, Corrugated board, Sandwich board



Corrugated Tool

Compress and cut media up to 5 mm

Materials

Corrugated board (up to 5 mm), Cardboard
(400–700g), B, C, E, F, EB, EE, EF Flute types

MODULES & TOOLS



Drag Module

Cut with up to 600 g of downforce

Included as standard with every F Series model, the Drag Module applies up to 600 g of downforce for high-precision work. Whether making detailed notations with pens or performing kiss-cutting with a drag knife, it's the perfect starting point for versatile and precise production.



Pen Tool

Draw on your media

Materials
Any flat media suitable for ink



Drag Knife Tool

Kiss-cut simple shapes

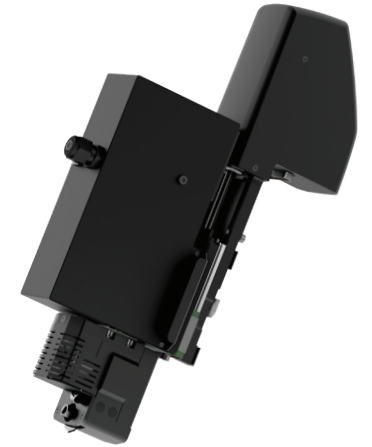
Materials
Adhesive vinyl, Sandblast material, Window film, Paper (<200g)

High Torque Rotary Module

Cut fabrics up to 5 mm cleanly

Powered by an electronic motor, the High-Torque Rotary Module offers exceptional cutting strength for all types of textiles. Thanks to its extra rotational power, it can also handle tougher, thicker materials like banner fabrics with clean, effortless cuts.

Materials
Polyester (coated/uncoated), Laminated fabrics, Canvas, Fleece, Felt, Packaging foam, Technical textiles



Standard Router Module

Mill and engrave rigid media at 25,000 RPM

Available in 1000w and 1400w power ratings, the Standard Routing Module is built to tackle a broad range of rigid materials commonly used in the graphic and sign industries. From hard foam PVC and acrylic to aluminium-covered foam boards, wood, and MDF, it ensures smooth, precise cutting performance.

Materials
MDF, Plexi, ACP/ACM, Expanded PVC board, Corrugated PP board, Foamcore with liners, Polycarbonate



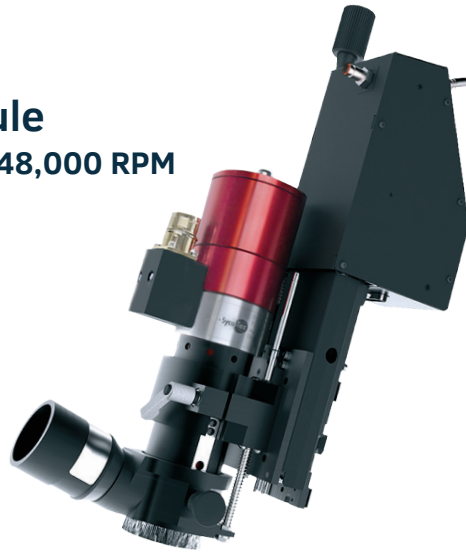
High Frequency Routing Module

Mill, engrave, and polish rigid media at 48,000 RPM

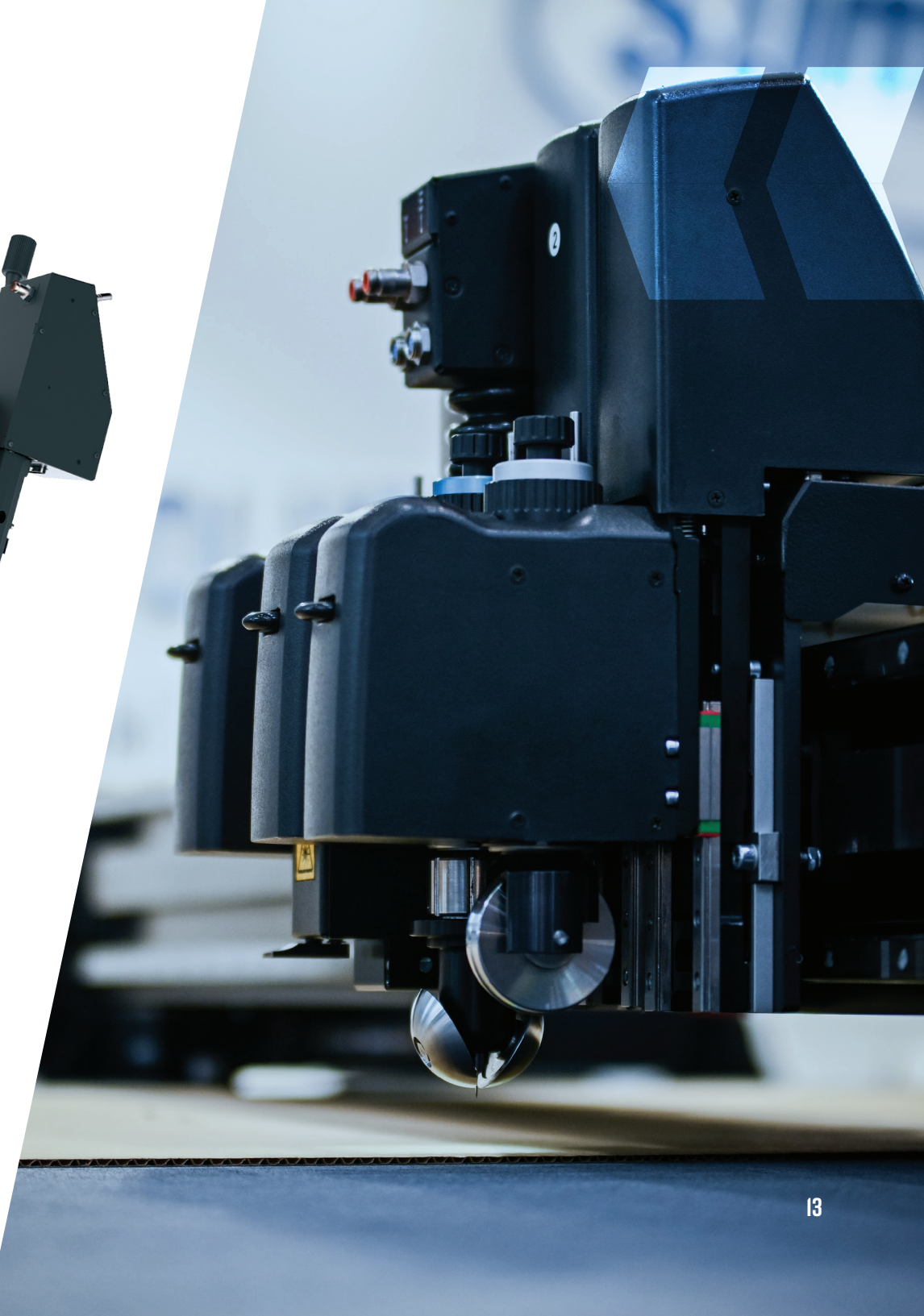
Designed for speed and precision, the High-Frequency Routing Module features a powerful spindle that achieves faster processing and exceptionally smooth finishes on rigid substrates. Its pneumatically controlled bit can be replaced quickly and easily, keeping downtime to a minimum and productivity at its peak.

Materials

Polyester (coated/uncoated), Laminated fabrics, Canvas, Fleece, Felt, Packaging foam, Technical textiles



Discover more about our tools and their applications.



5 REASONS WHY THE F SERIES IS PERFECT FOR YOU

1

Engineered for Your Customer Demands

Whether you're in sign & display, packaging, or textile, the F Series delivers the versatility and performance to meet your specific production needs. It gives you the freedom to scale and diversify your business—easily and on your terms.

2

Achieve Consistent, High-Precision Cuts

Cut after cut, the F Series delivers unmatched consistency. With over 15 easily interchangeable tools, seamless multi-tool support, and the capability to handle materials up to 42 mm thick, it's built for precision at scale. Achieve repeatability under 0.02 mm, so every job meets the same exacting standard as the first.

3

Seamlessly Integrate into Your Workflow

Get up and running quickly with intuitive software, a fast learning curve for operators, easy tool switching, and compatibility with 20+ different RIPs.

4

Invest in a Future-Proof Flatbed Cutter

Engineered for durability, minimal maintenance, and unwavering precision, the F Series is a smart, future-proof investment. With extended consumable lifespans and spare parts available for up to 10 years, long-term value and reliable support.

5

Choose a Partner, Not Just a Manufacturer

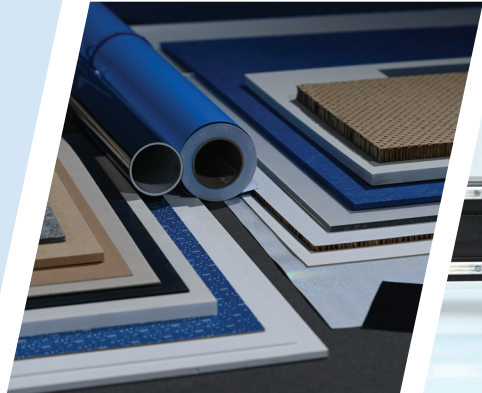
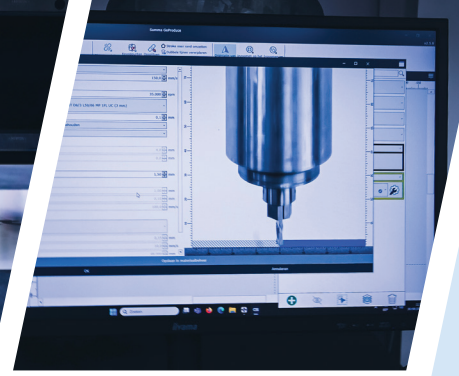
With over 50 years of experience and a global partner network in the finishing industry, Summa is more than a manufacturer, we're a partner that's ready to help when you need it.





“Since adding the Summa F Series to our workflow, we’ve seen a remarkable boost in efficiency. Its multifunctional head lets us seamlessly switch between techniques, drastically cutting down production time, especially on high-volume jobs.”

**Miguel Abuin,
General Manager of MP**



Discover how the F Series can transform your workflow and grow your business.

Book a demo or speak with a product specialist:



F SERIES

DIGITAL FLATBED CUTTERS FOR SIGNAGE, PACKAGING & TEXTILES



Unlock full info on the **F Series**

About Summa

Summa is a global leader in digital cutting solutions, delivering innovative technology for signage, packaging, textiles, and industrial applications. Our product portfolio includes state-of-the-art vinyl, flatbed, and laser cutters that ensure exceptional precision and quality.

Summa is headquartered in Gistel, Belgium, with regional hubs in USA, Italy and UK. Leveraging more than 50 years of experience, we continue to pioneer cutting-edge technology that redefines precision cutting. Discover more at www.summa.com or join our community on [Facebook](#), [LinkedIn](#), [Instagram](#), and [YouTube](#).

Summa nv
Rochesterlaan 6
8470 Gistel
Belgium

Summa America LLC
8517 W. Washington Street
Suite 101
Indianapolis, IN 46231
USA

Copyright 2025© Summa nv. Images and graphics shown are for illustration purposes only and may not be an exact representation of the product. Technical specifications are subject to change without prior notice.



Summa